



Torrey Hills Technologies, LLC.
A Company of G Tech Systems Group, Inc.
10401 Roselle Street, Suite 400, San Diego, CA 92121
Tel. (858) 722-4805 Fax. (858) 630-3383 www.torreyhillstech.com

Photo etching is a precision metal fabrication process in which photographic part images are first printed on metal sheets and protected by photoresist, the exposed areas will then be removed by chemical solutions.



Our process flow is:

1. Artwork Generation and Phototool Production
2. Metal Preparation
3. Photoresist Coating
4. Photoresist Exposing and Developing
5. Etching
6. Stripping and QA

Under ISO 9002 certified quality management system, our skilled and dedicated employees will meet or exceed your expectations.



We offer the following advantage:

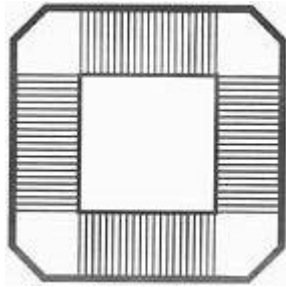
1. Low Cost Tooling - All the tooling is created via CAD in a relatively short time.
2. Low Cost Modifications – Our process allows the customer to do practical experiments at a minimum cost. Shortruns are possible ensuring that cost effective improvements are easy to implement.
3. Quick Prototype to Production – Our process can be used to make one or a million parts, with the same tooling used every time. This allows the customers to develop their concept from prototype to pilot to full production quickly and easily. Our typical lead time is 3 weeks for prototypes.
4. Metal Properties Unaffected – Photo etching carries the unique advantages of leaving the internal structure of the metal unchanged.
5. Burr Free - Our process produces burr free components, thus removing the need for costly time-consuming de-burring.
6. Identification Marks – Customers' logos, part numbers or other identifying marks can easily be etched into the surface during manufacture at no extra cost.



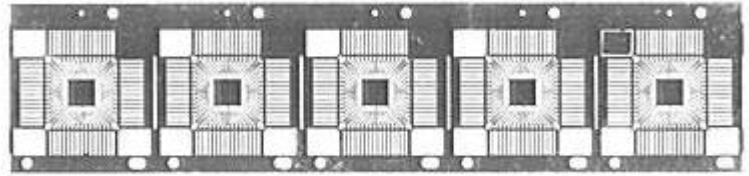
You will be satisfied with our high quality, low total cost and quick turn around, we guarantee it.

Torrey Hills Technologies, LLC. 10401 Roselle Street, Suite 400, San Diego, CA 92121
Tel. (858) 722-4805 Fax. (858) 630-3383 www.torreyhillstech.com

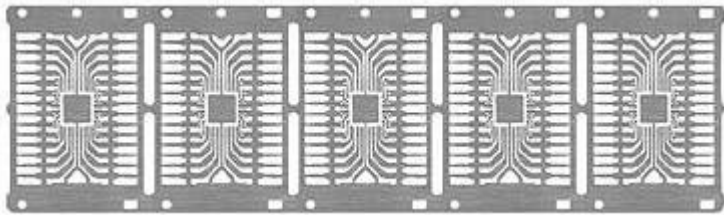
Typical Photo Etched Products



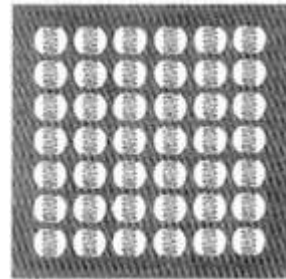
QFP84L



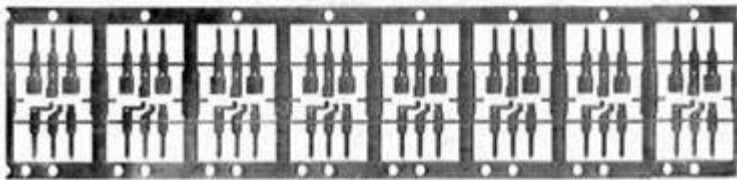
56L



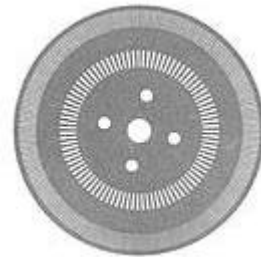
DIP28L



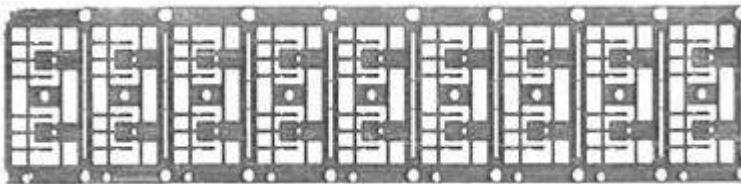
Filter



CU06 7118 LF6



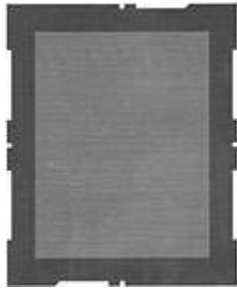
Encoder



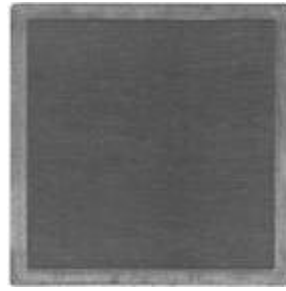
SOT-223



SMT Stencil



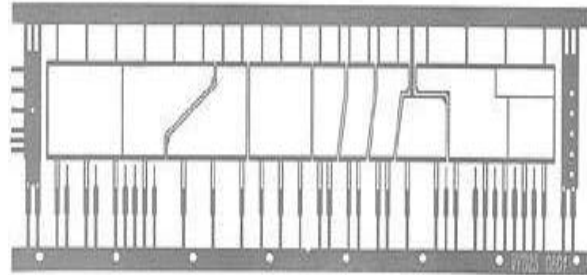
CRT Stencil



TO – 244 Lids



Array 20-0402



Array 25-0501

Typical Technical Specifications

Material	Copper, Stainless Steel, Kovar and Alloy 42 etc.				
	Material Thickness				
	0.002"	0.004"	0.006"	0.008"	0.032"
Thickness Tolerance	0.001"	0.0005"	0.0005"	0.001"	0.002"
Minimum Tolerance	0.0005"	0.0005"	0.001"	0.001"	0.004"
Minimum Hole Dimension	0.002"	0.004"	0.006"	0.008"	0.032"
Slot Size	0.0015"	0.004"	0.003"	0.007"	0.028"
Remarks	Special requirements, please inquire.				